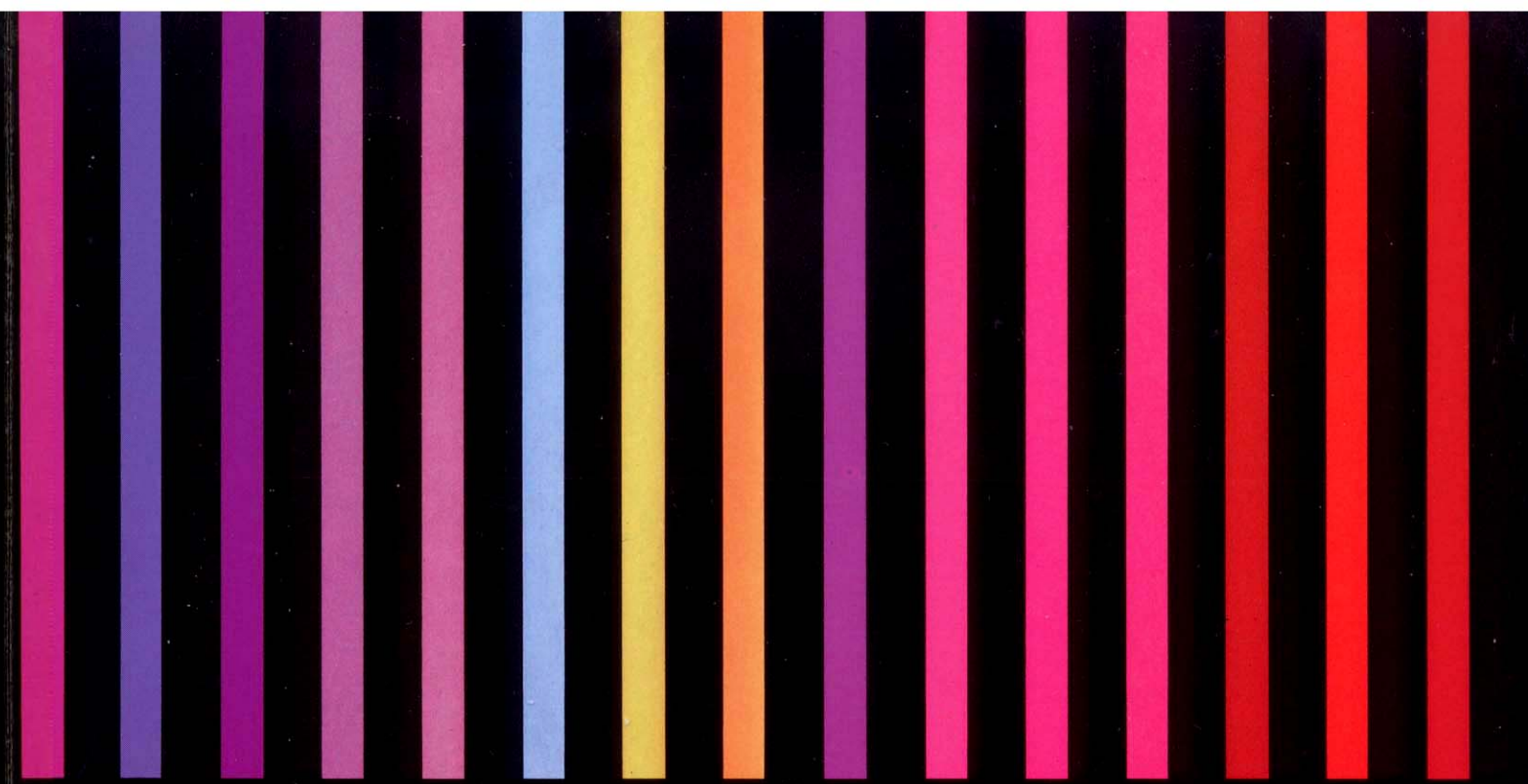


- 1. SOFTLITE - ARGON
CLEAR GLASS COATED 2800
- 2. WARM WHITE - ARGON
CLEAR GLASS COATED HP74
- 3. WHITE - ARGON
CLEAR GLASS COATED HP33
- 4. WHITE - ARGON
CLEAR GLASS COATED 3500
- 5. DAYLIGHT - ARGON
CLEAR GLASS COATED HP39
- 6. WHITE - ARGON
CLEAR GLASS COATED 4500
- 7. NORTHGIGHT - ARGON
CLEAR GLASS COATED HP29
- 8. SNOW WHITE - ARGON
CLEAR GLASS COATED HP20
- 9. WHITE - ARGON
CLEAR GLASS COATED 6500
- 10. ARGON BLUE - ARGON
CLEAR GLASS UNCOATED
- 11. LIGHT BLUE - ARGON
CLEAR GLASS COATED T10
- 12. STANDARD BLUE - ARGON
CLEAR GLASS COATED T14
- 13. BRILLIANT BLUE - ARGON
CLEAR GLASS COATED 246
- 14. MIDNIGHT BLUE - ARGON
BLUE GLASS COATED 246
- 15. DEEP BLUE - ARGON
BLUE GLASS COATED T14

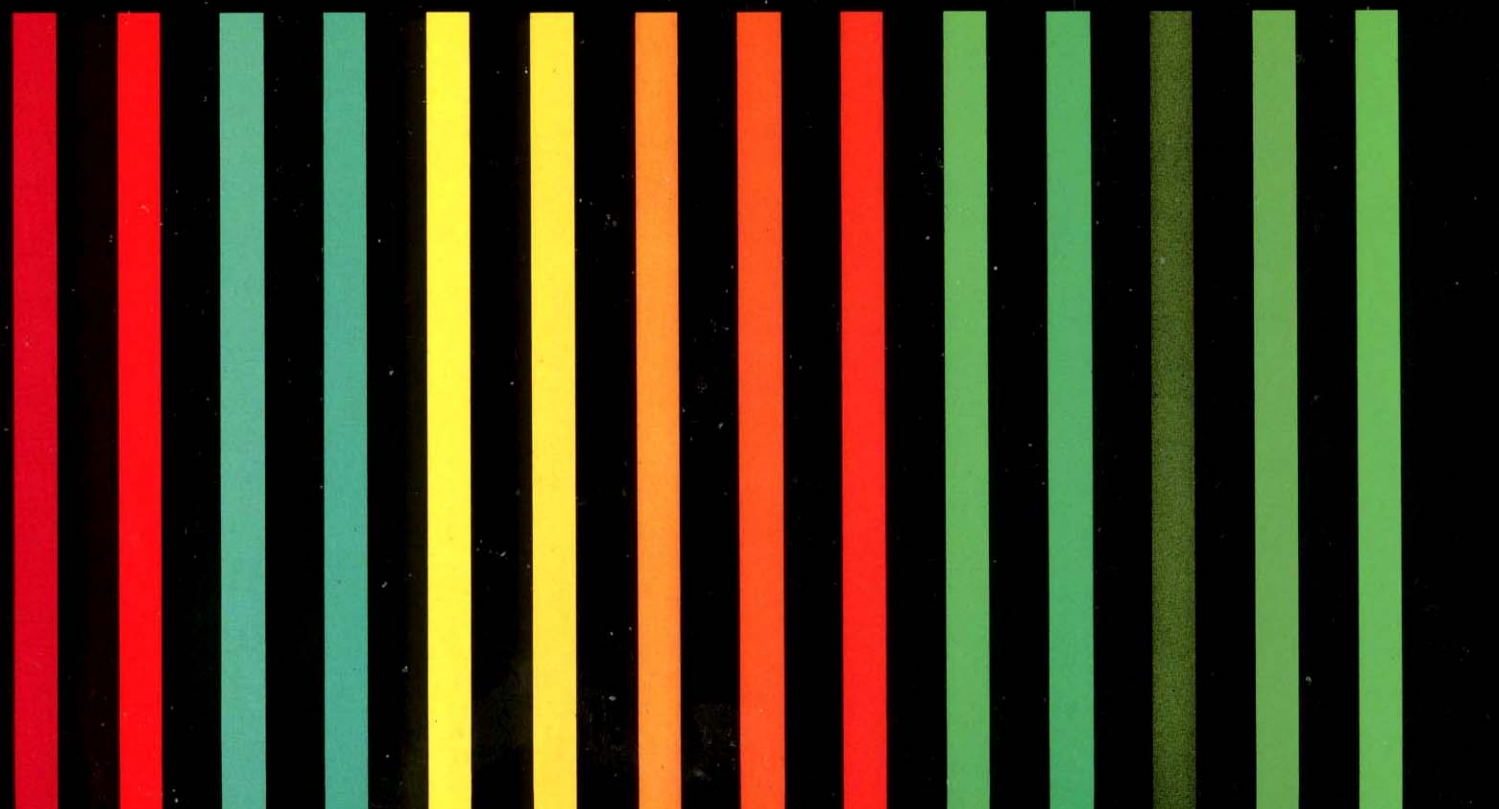


- 16. MARBON - NEON
BLUE GLASS UNCOATED
- 17. PURPLE HAZE - ARGON
CLEAR GLASS COATED P126
- 18. PURPLE - ARGON
BLUE GLASS COATED 1805
- 19. ORCHID - ARGON
CLEAR GLASS COATED P91
- 20. MAGENTA - ARGON
CLEAR GLASS COATED VT4
- 21. LAVENDER LILAC - ARGON
CLEAR GLASS COATED L21
- 22. PEACH - ARGON
CLEAR GLASS COATED P81
- 23. PALE PINK - ARGON
CLEAR GLASS COATED C400
- 24. SHOCKING PINK - NEON
CLEAR GLASS COATED P126
- 25. ROSE PINK - ARGON
CLEAR GLASS COATED G2
- 26. ARGON PINK - ARGON
CLEAR GLASS COATED 1505
- 27. BRIGHT PINK - NEON
CLEAR GLASS COATED 246
- 28. FLUORESCENT RED - NEON
CLEAR GLASS COATED HP39
- 29. CLEAR RED - NEON
CLEAR GLASS UNCOATED
- 30. RUBY RED - NEON
RED GLASS UNCOATED

ARGON / NEON
DENOTES GAS FILL

SPECIALS UVC8 LONG WAVE ULTRA VIOLET. Tri-phosphors – in addition to softlite these are available with 3000°, 4200°, 5000° and 6500°. Special whites V45B, V5100, 6500HO, V8300. Specials are subject to minimum quantities and extended delivery times.

- 31. BRILLIANT RED - ARGON
RED GLASS COATED 1301
- 32. ARGON RED - ARGON
RED GLASS COATED C400
- 33. TURQUOISE - ARGON
CLEAR GLASS COATED W1136
- 34. AQUAMARINE - ARGON
CLEAR GLASS COATED W1140
- 35. BRILLIANT YELLOW - ARGON
YELLOW GLASS COATED HP33
- 36. BUTTERCUP YELLOW - ARGON
YELLOW GLASS COATED HP74
- 37. GOLDEN YELLOW - ARGON
YELLOW GLASS COATED C400
- 38. AMBER - NEON
CLEAR GLASS COATED W7
- 39. BRILLIANT ORANGE - ARGON
YELLOW GLASS COATED G2
- 40. STANDARD GREEN - ARGON
CLEAR GLASS COATED W7
- 41. EMERALD GREEN - ARGON
CLEAR GLASS COATED W110
- 42. DEEP GREEN - ARGON
YELLOW GLASS UNCOATED
- 43. LIME GREEN - ARGON
YELLOW GLASS COATED W7
- 44. APPLE GREEN - ARGON
GREEN GLASS COATED W7



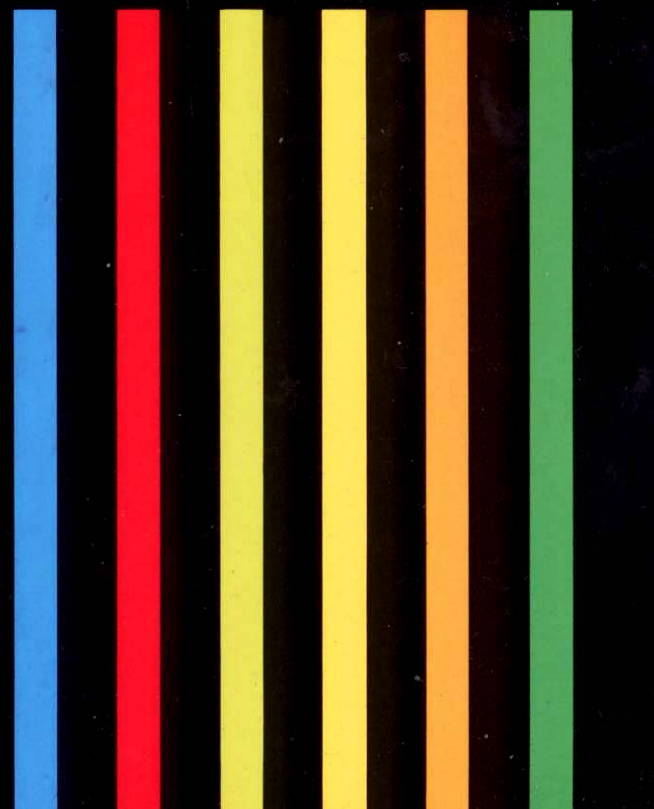
MASONLITE

LEADING THE WORLD IN NEON

DOUBLE COATED

Note: Double coat tubes have a colour pigment on the inside of the clear glass tube. Tight bends may cause the pigment to thin so that the colour 'washes out' on the bend. Double coat tube is more suited to straights and easy bends

- 45. NEO BLUE - ARGON
CLEAR GLASS DOUBLE COATED
- 46. NEO RUBY - NEON
CLEAR GLASS DOUBLE COATED
- 47. BRITE YELLOW - ARGON
CLEAR GLASS DOUBLE COATED
- 48. NEW GOLD - ARGON
CLEAR GLASS DOUBLE COATED
- 49. OLD GOLD - ARGON
CLEAR GLASS DOUBLE COATED
- 50. V. GREEN - ARGON
CLEAR GLASS DOUBLE COATED



MASONLITE, 36 Second Avenue, Chatham, Kent ME4 5AX, England
Tel: (44) 1634 812751. U.K. Tel: 01634 812751. Fax: 01634 811883

This colour chart is as accurate as the printing process will allow. Masonlite cannot accept responsibility for variations between these colours and the illuminated tubes. The colours shown are representative and should be used as a guide only.